

Soprano Sax.

A1

55

55

54

53

60"

42

55

42

55

↓ ↓
S|A1|A2|B1|A3|A4|A1|A3|B2|C||

Soprano Sax.

A2

54

Musical notation for measure 54, featuring a treble clef, a key signature of one sharp (F#), and a dynamic marking of *p*. The notation shows a single note on the staff with a long horizontal line underneath, indicating a sustained sound.

55

Musical notation for measure 55, featuring a treble clef, a key signature of one sharp (F#), and a dynamic marking of *mp*. The notation shows a melodic line with a slur and a long horizontal line underneath, indicating a sustained sound.

53

Musical notation for measure 53, featuring a treble clef, a key signature of one sharp (F#), and a dynamic marking of *p*. The notation shows a melodic line with a slur and a long horizontal line underneath, indicating a sustained sound.

53

Musical notation for measure 53, featuring a treble clef, a key signature of one sharp (F#), and a dynamic marking of *mf*. The notation shows a melodic line with a slur and a long horizontal line underneath, indicating a sustained sound.

55

Musical notation for measure 55, featuring a treble clef, a key signature of one sharp (F#), and a dynamic marking of *p*. The notation shows a single note on the staff with a long horizontal line underneath, indicating a sustained sound.

54

Musical notation for measure 54, featuring a treble clef, a key signature of one sharp (F#), and a dynamic marking of *p*. The notation shows a melodic line with a slur and a long horizontal line underneath, indicating a sustained sound.

56

Musical notation for measure 56, featuring a treble clef, a key signature of one sharp (F#), and a dynamic marking of *p*. The notation shows a melodic line with a slur and a long horizontal line underneath, indicating a sustained sound.

53

Musical notation for measure 53, featuring a treble clef, a key signature of one sharp (F#), and a dynamic marking of *pp*. The notation shows a melodic line with a slur and a long horizontal line underneath, indicating a sustained sound.

55

Musical notation for measure 55, featuring a treble clef, a key signature of one sharp (F#), and dynamic markings of *p* and *ppp*. The notation shows a melodic line with a slur and a long horizontal line underneath, indicating a sustained sound.

120"

↓
S|A₁|A₂|B₁|A₃|A₄|A₁|A₃|B₂|C||

S|A1|A2|B1|A3|A4|A1|A3|B2|C||

(only played on repeat of A3)

ton/air fluctuating slightly



pp

(only played on repeat of A3)

ton/air fluctuating slightly



ppp

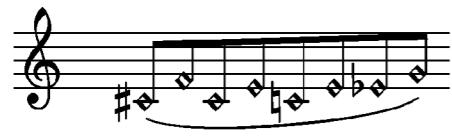
Soprano Sax.

A3

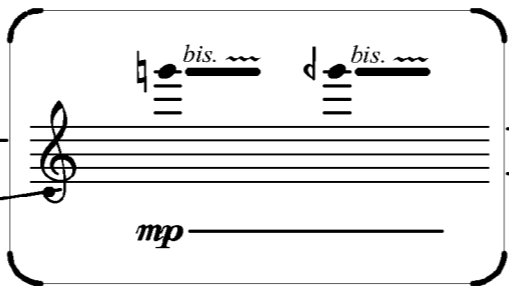
sempre legatissimo

(only played on repeat of A3)

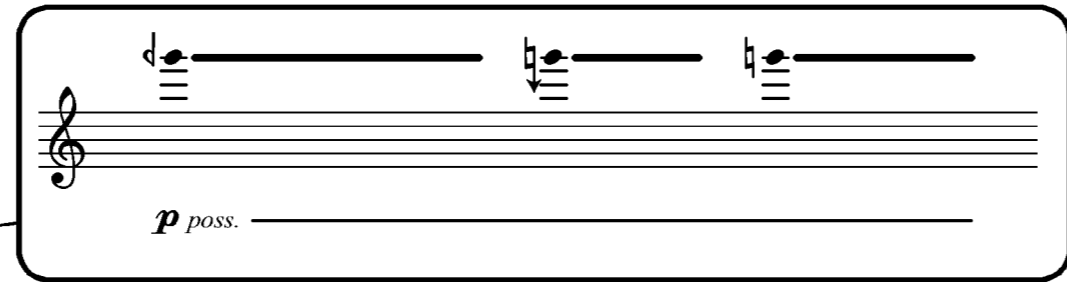
ton/air fluctuating slightly



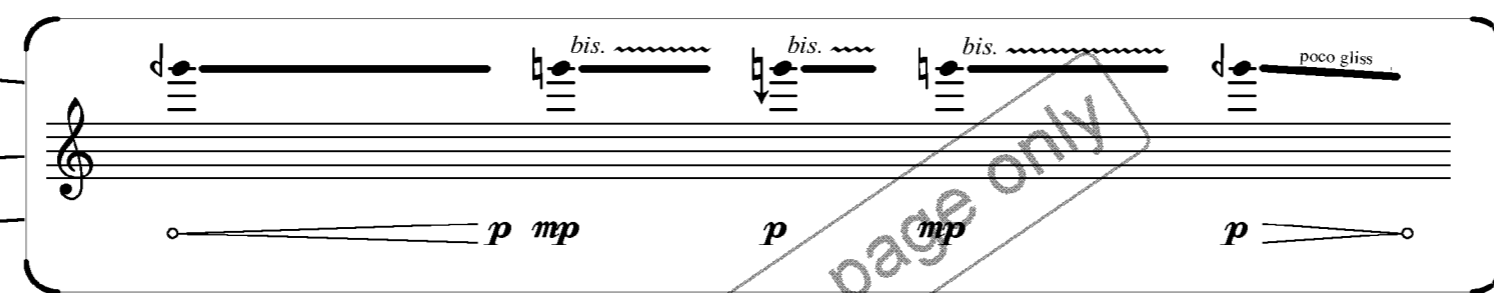
pp



mp



p poss.

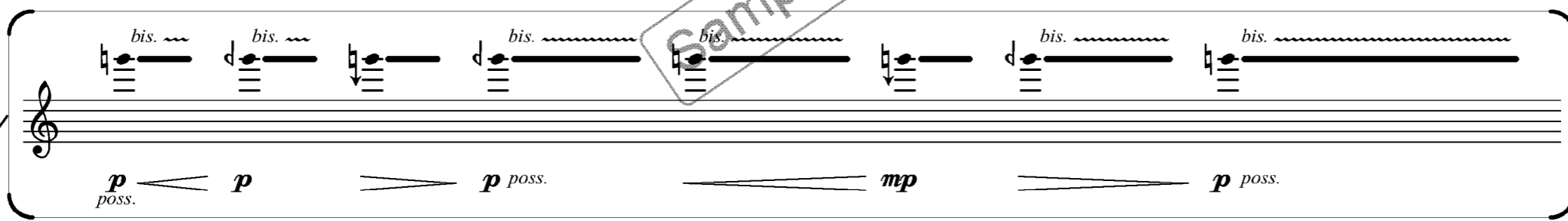


p mp

p

mp

p



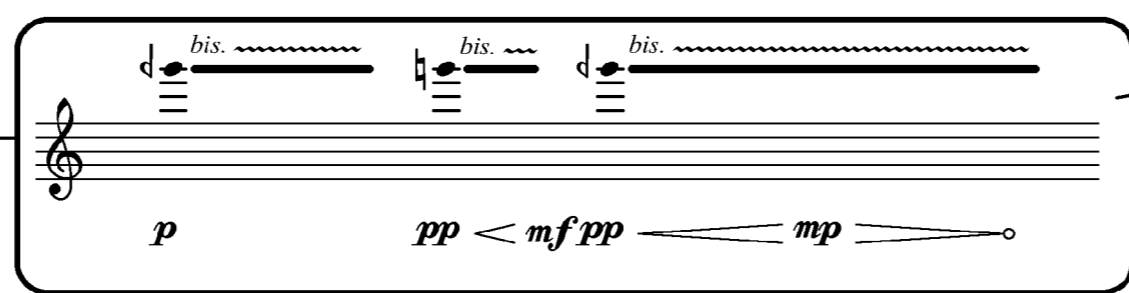
p poss.

p

p poss.

mp

p poss.

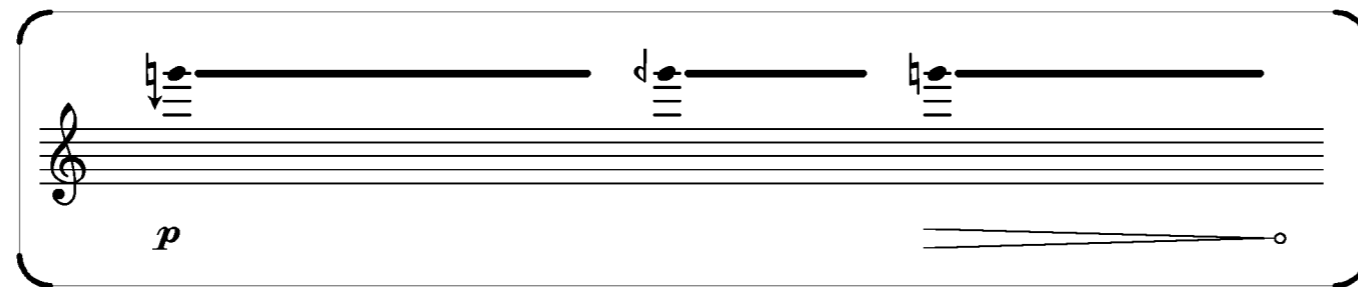


p

pp < mf ppp

mp

60"



p