

# Five stoned cherries splitting on the fall

for piano solo

David Byers.

lady, those cherries plenty  
which grow on your lips dainty  
Eye long will fade and languish  
Then now, while yet they last them  
O let me pull and taste them.

Precise tempo

♩ = 55 Two octaves bass

With both pedals



Sample page only



Sample page only

loco

flexible tempo

mp

accel e cresc

ff very hard

pp

mf

sotto voce

cantabile ma p

mf

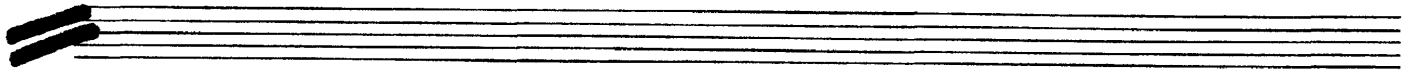
gentle ripple

mf

release pedal gradually

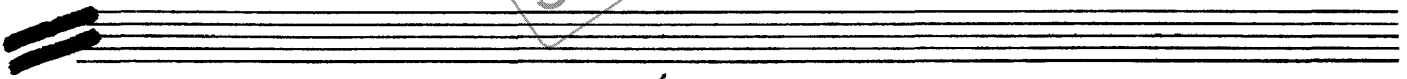
Sample page only

Handwritten musical score for the first system. It consists of a piano staff (top) and a bass staff (bottom). The piano staff begins with a treble clef, a key signature of one flat (B-flat), and a time signature of 8. The bass staff contains several measures of music, including a triplet of eighth notes marked with a '3' and '8va'. Dynamic markings include *mf*, *mp*, and *pp*. There are also some handwritten annotations like '7' and 'y'.



Handwritten musical score for the second system, primarily on a piano staff with a treble clef. It contains a series of notes, some with accidentals, and ends with a double bar line and a fermata. There are some handwritten annotations like '7' and 'y'.

Sample page only

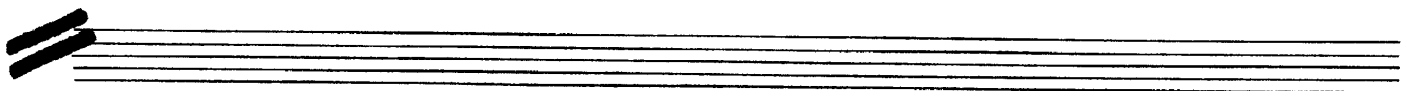


Handwritten musical score for the third system. It consists of a piano staff (top) and a bass staff (bottom). The piano staff has notes with accidentals and dynamic markings like *ff*. The bass staff has notes and rests. There are handwritten annotations: "very hard always ff" and "slite note cluster".



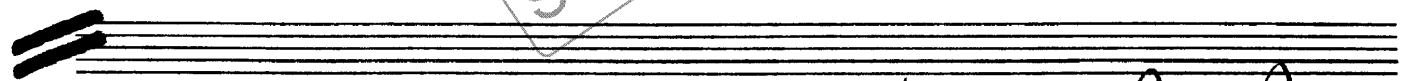
Handwritten musical score for the fourth system. It consists of a piano staff (top) and a bass staff (bottom). The piano staff features dense clusters of notes and dynamic markings like *mf* and *p*. The bass staff has notes and rests. There are handwritten annotations: "cluster", "wide tone cluster", and "mf rall ~~~".

Handwritten musical score for the first system. It consists of two staves: a treble clef staff and a bass clef staff. The treble staff begins with a treble clef and a common time signature. The music includes various note values, rests, and dynamic markings such as *depress silently*, *mf*, and *8ve*. There are also some handwritten annotations like *8ve* and *8ve* in a dashed circle.



Handwritten musical score for the second system. It consists of two staves: a treble clef staff and a bass clef staff. The music includes various note values, rests, and dynamic markings such as *mf*. There is a handwritten instruction: "repeat intermittently until underlying chord is only just audible".

Sample page only



Handwritten musical score for the third system. It consists of two staves: a treble clef staff and a bass clef staff. The music includes various note values, rests, and dynamic markings such as *mf*, *f*, *mp*, and *p*. There is a handwritten instruction: "accel ~~~ rall".



Handwritten musical score for the fourth system. It consists of two staves: a treble clef staff and a bass clef staff. The music includes various note values, rests, and dynamic markings such as *calmly*, *mf*, *f*, and *p*. There is a handwritten instruction: "disturb till".